



NAM PHAT GROUP



NAM PHAT SHIPBUILDING AND SHIPPING CORPORATION



www.namphatship.com.vn



GENERAL INTRODUCTION

Nam Phat Shipbuilding and Shipping Corporation (Nam Phat Ship) is one of 5 member units of **Nam Phat Group** established in 2010, its main activities are in the following areas:

- Newly built cargo ships with a tonnage of up to 10,000 DWT;
- New construction of specialized ships: fishing ship, SAR, tugboat, dredger ...;
- Processing steel structures;
- Repairing and converting ships to 6,500DWT
- Warehousing and loading and unloading services
- Seaports receive ships of 10,000 DWT
- Domestic and international shipping
- Domestic and international maritime brokerage services
- Steel structures products

The factory was built in Ha An, Quang An, about 5 nautical miles from the seaport, on an area of 20 hectares, with 4 hectares of water area, modern, synchronous infrastructure. The original number of staff was about 400 workers.

Representative office: Room 1010 – 18T1 – Trung Hoa Nhan Chinh Area, Thanh Xuan Dist., Hanoi, Vietnam

Email: shipowner@namphatship.com.vn – **Website:** www.namphatship.com.vn



BỘ GIAO THÔNG VẬN TẢI
CỤC DĂNG KÝ VIỆT NAM

CỘNG HÒA XÃ HỘI CHỦ NGHĨA VIỆT NAM
Độc lập - Tự do - Hạnh phúc

Số: 423/19TB-MSC

Hà Nội, ngày 10 tháng 7 năm 2019

THÔNG BÁO

CƠ SỞ ĐÚ ĐIỀU KIỆN ĐỒNG MÔI/HOÀN CẢUSỬ CHỮA TÀU BIỂN

CỤC DĂNG KÝ VIỆT NAM THÔNG BÁO

Cơ sở: Công ty Cổ phần Đóng tàu và Vận tải Biển Nam Phát
(Số phân biệt SX19119)

Địa chỉ: Khu phố 12, phường Hà An, thị xã Quảng Yên, tỉnh Quảng Ninh

Đã được đánh giá đủ điều kiện:

Sửa chữa tàu biển và thép trọng tải đến 7000 tấn

Phù hợp với các quy định của Nghị định số 111/2016/NĐ-CP ngày 01 tháng 7 năm 2016.

Thời hạn cập lại Thông báo:

10/07/2024



KT. CỤC TRƯỞNG
PHÓ CỤC TRƯỞNG
Nguyễn Vũ Hải



ORIENTATION FOR DEVELOPMENT

With goals and unrelenting efforts, we have the ability to meet the transport and distribution of domestic and international sea transport, build and repair ships for all partners, customers with the mottos:

- Provide consistent and reliable maritime services
- Provide products with the most competitive prices to customers and partners
- Meet the legitimate requirements of customers enthusiastically, quickly and flexibly
- Provide stable ship schedules, high frequency, ensure safe and timely transportation
- Repair and building new ships with high quality and technical standards

VISION

Becoming a leading provider of shipping, building and repairing ship services in Vietnam market for customers wishing to find reliable, safe and high-quality partners.

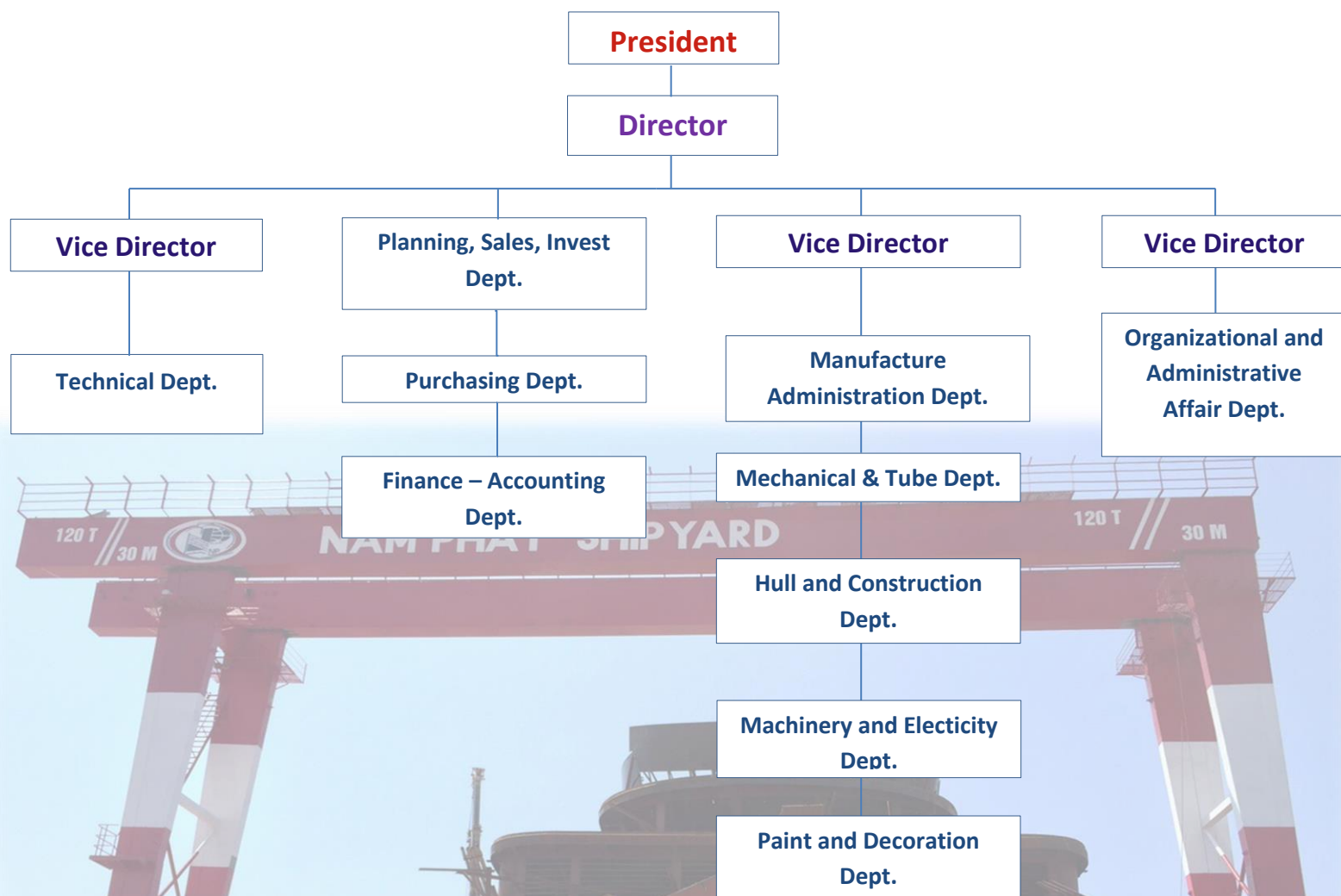
MISSION

Always ready to provide services to ship owners, shipping partners with the highest standards of transport, building and repairing river and sea ships, on time with the most reasonable cost.

CORE VALUES

- **Reasonable cost:** We are always proud of the most competitive rates on the market today. This is the strength for many customers to trust using our services.
- **Experienced team:** Customers are always satisfied with the quality of service we provide by our experienced staff. We are always proud that our working experience and skills are the most valuable assets of the company.
- **Building long-term relationships:** We always try to build relationships with all customers from the most basic services. In that spirit of cooperation, we hope to be the companion of customers throughout the development stages.

ORGANIZATIONAL STRUCTURE



NAM PHAT SHIPYARD

CERTIFICATION AND QUALITY MANAGEMENT SYSTEM

The quality management system of the factory has been checked, assessed and certified to comply with **ISO 9001-2008 standards**.

Vietnam Register Department (VR) has checked and issued a certificate of approval of production facilities for the Plant in the field of ship building and repair.

Standard systems applied:

- IACS
- Standard for building and repairing ships of the factory.
- Rules and Regulations of Vietnam Register and international registrations
- Approving welding process and welder certificate:
- The entire welding process at the factory has been approved by the Vietnam Register
- Half of employees of the Company is checked and certified by the Vietnam Register



FACTORY

The main factories of the company include:

- **Shipyard workshop:** L x B = 80mx100m, divided by area according to the construction stage, including:
 - Factory cleaning and priming steel plate with automatic lines:
 - Cutting area is equipped with 02 CNC steam cutters and Plasma cutting machines
 - Curved bending and processing area is equipped with 01: 3-roller bending machine, hydraulic press 500 tons and many other production machines
 - Parts for processing details, detail assemblies (grinding, assembly, welding).
 - General assembly area (assembly, welding, fitting, grinding and painting).
 - The factory is equipped with equipment for lifting 5-30 tons with a total truck of 60 tons, allowing the construction of sections of up to 60 tons to be fully outfitting in the factory, limiting the impact of the weather.
- **Mechanical - pipe factory:** L x B = 95m x 80m
 - The factory is fully equipped with necessary equipment for construction of piping systems and mechanical details such as lathe, mechanical cutting machine ...
 - The pipe details are processed and the pressure test completed at the factory before installing or galvanized ...
 - The factory is equipped with a pipe washing system with equipment system to test the pressure of the pipe system.



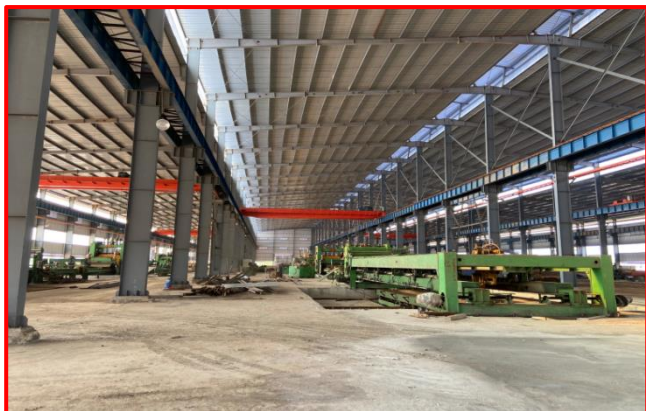
- **Momentum and dock:** After finishing construction and painting in the workshop, the sections will be assembled at the skid and ship sides to launch. The factory currently has 02 slopes including:
 - Momentum number 01:30 m (wide) x 140 m (long); slope: 1:10; Lifting capacity: 10,000 T
 - Momentum number 02:30 m (wide) x 160 m (long); slope: 1:10; Lifting capacity: 5,000 T
 These two ramps are equipped with two 200-ton crane and one 120-ton base crane, allowing for a large combination of modules before the momentum.
- **Dock:** 30 m (wide) x 120 m (long), equipped with a 30 ton crane, industrial gas and compressed air system, can receive repairs of ships of under 5,000 tons.



- **Outfitting berth:** Dedicated port serving the 300m long plant, equipped with a 40-ton base crane, a range of 28m and an industrial gas system, electricity and a synchronous fresh water supply system. The factory has 01 1x750HP towing vessel for towage.



- **Machining and cutting center:** L x B = 160m x 120m, equipped with gantry crane system of 10-30 tons, with cutting machine system from 8 to 16 cups and many other auxiliary machines, qualified fulfill production needs. This is a metal cutting center with a state-of-the-art equipment line, ready to meet the requirements of sheet metal cutting, sawing and cutting of steel, metal and alloy types (stainless steel, hot rolled steel, rolled steel). cold, galvanized steel, electrical engineering steel, ...) according to required sizes, competitive costs.



- **Machinery & electricity factory:** L x B = 95m x 20 m, with equipment for processing parts, checking and regular maintenance of machines, equipment, machine assemblies



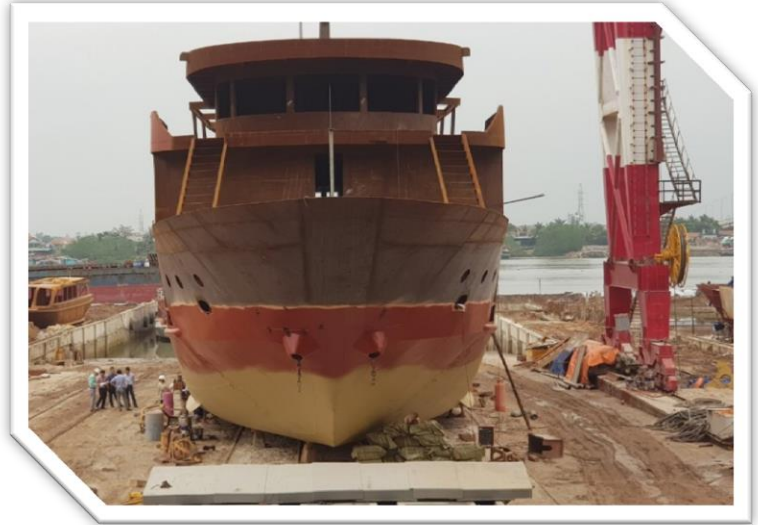
Momentum serving the repair and building of ships of under 6,500DWT are equipped with synchronous equipment systems including:

- 60 ton hydraulic winch: 03 pieces
- System when compressing for cleaning and painting the hull.
- Auxiliary systems such as industrial gases, electrical systems and lighting ...

The company has successfully repaired and converted 10 ships of 800-3,500 DWT.

In addition, Nam Phat Ship is also trusted by ship owners to cooperate in building 72-seat tourist ships, 24-bedroom yachts, steel vessels to replace wooden tourist ships in Ha Long Bay, Cat Ba Island, ...







OCEAN SHIPPING

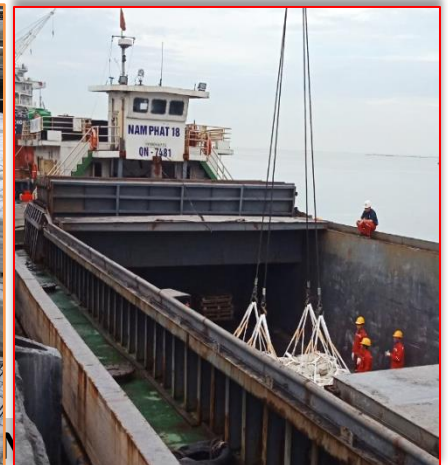
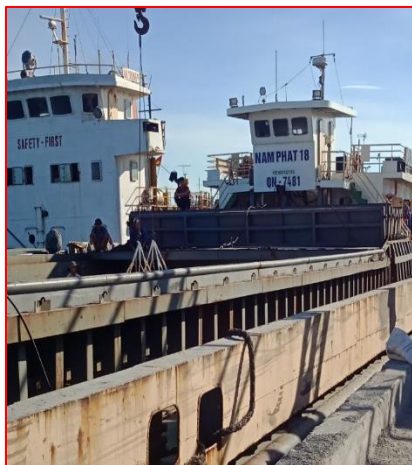
INTRODUCTION

In the field of shipping, Nam Phat Ship is considered as one of the major shipping enterprises with a stable customer network, and an increasingly expanding market share. The company has also established a brand in the domestic transport market as well as international transport market, including domestic transport, import and export goods of Vietnam and countries in the Eastern Region. South Asia.

With a long-term advantage in the shipping industry, Nam Phat Ship has a fleet of shipping ships that can operate from the North to the South, concentrated in major ports: Hai Phong, Quy Nhon, Can Tho, Ho Chi Minh. Coming to Nam Phat Ship, customers have a flexible and wide choice of domestic and international sea transport services such as freight forwarding, LCL, bulk cargo, with the best quality and cost and the most optimal fee.

As we always trying to invest in innovation to meet the changing needs of the market, Nam Phat Ship provides customers with products and services with the following principles:

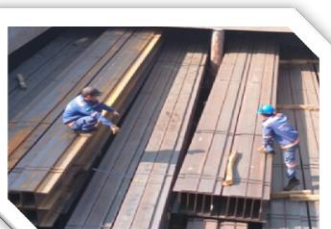
- Providing appropriate and reliable maritime services
- Offer products at the most competitive prices.
- Meet the legitimate requirements of enthusiastic, fast and flexible.
- Provide stable and high frequency schedules. Be sure to transport the goods to a safe place, on time.
- Business activities comply with the laws of the Vietnamese government, domestic and international maritime law.
- Healthy business activities, making profits, fulfilling obligations to the state and society.



Until now, Nam Phat is a reliable shipping agency for many domestic and foreign businesses and customers, including: Hoa Sen Group, Hoa Phat Group, China Steel Sumikin Vietnam Corporation., Steel Searcher Vietnam Co., Ltd., Shengli Vietnam Special Steel Co., Ltd., Vietnam Coal and Mineral Industries Group ...

With a shipping team who are professionally trained, enthusiastic and responsible and enthusiastic management team, Nam Phat always tries to build the brand image of the company with the motto: Customers' s satisfaction is the foundation for existence and development, ensuring to provide customers with professional service with the best quality and price.

The volume of goods transported by Nam Phat is about 80,000 tons / month, diverse in types of goods: iron and steel, corrugated iron, machinery, coal, ore, wood, piles, flour products (starch, cement) bamboo, palm bran) ...

**MARINE TRANSPORT SERVICES****FULL SHIPPING SERVICE**



DELIVERY, TALLY AND ARRANGING OF GOODS



CUSTOMS CLEARANCE OF IMPORT AND EXPORT GOODS

NAM PHAT'S VESSELS

In 2010, we introduced the first ship MV. Nam Phat 01 to enter the shipping market. Since then, Nam Phat continues to put 4 more ships into operation, including: MV. Nam Phat 02, MV. Nam Phat 18, MV. Nam Phat Queen and MV. Nam Phat Star to serve the transport demand of customers.



MV. Nam Phat 01

Vessel Type: GENERAL CARGO

Deadweight: 1924,6 T

Gross Tonnage: 999

Length Overall x Breadth Extreme:

67.5m x 11.02m

Year Built: 2010

Flag: VIETNAM

Home port: HAIPHONG





MV. Nam Phat 02

Vessel Type: GENERAL CARGO

Deadweight: 3090,3 t

Gross Tonnage: 1598

Length Overall x Breadth Extreme:
79.8m x 12.82m

Year Built: 2010

Flag: VIETNAM

Home port: HAIPHONG



MV. Nam Phat 18

Vessel Type: DRY BULK CARGO

Deadweight: 1270,0 t

Gross Tonnage: 835

Length Overall x Breadth Extreme:
64.1m x 12.05m

Year Built: 2018

Flag: VIETNAM

Home port: HAIPHONG





MV. Nam Phat Star

Vessel Type: GENERAL CARGO

Deadweight: 3084 t

Gross Tonnage: 1638

Length Overall x Breadth Extreme:
79.92m x 12.62m

Year Built: 2011

Flag: VIETNAM

Home port: HAIPHONG



MV. Nam Phat Queen

Vessel Type: GENERAL CARGO

Deadweight: 3242,4 t

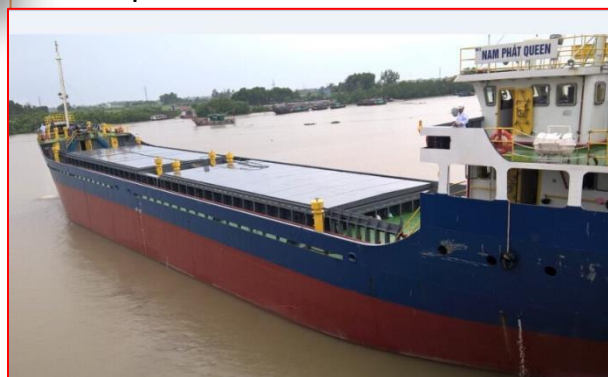
Gross Tonnage: 1599

Length Overall x Breadth Extreme:
74,82m x 12.6m

Year Built: 2017

Flag: VIETNAM

Home port: HAIPHONG



TRUCKING SERVICE

In addition to sea freight services, Nam Phat Ship also has a fleet of 30 trucks with different capacities (5 tons, 7 tons, 8 tons, 10 tons, 12 tons, 32 tons and 35 tons) suitable to the needs of customers to transport goods from the port to the warehouse with timely manner:. We set up a professional, dynamic transport team, offering flexible solutions, with appropriate plans, to achieve maximum efficiency.

In addition, Nam Phat Ship has co-laborations with a number of road transport units by specialized mechanical equipment to support the delivery and delivery of goods in the best way for customers' partners when required.

Trucking services include:

- Loading and arranging goods
- Freight forwarding
- Transporting bulk cargo, dry cargo, and liquid cargo
- Transportation of goods temporarily imported for re-export and temporarily exported for re-import
- Storage and distribution of goods



Through many years of operation, Nam Phat Ship has built and developed a full system of the most trustworthy and effective partners in the field of chartering brokers, linking with domestic and foreign ship owners to lease long-term, short-term, meet the needs and provide for the convenience of customers.

With extensive experience and relationships with ship owners, shipping partners and chartering partners, we have successfully broker many ships and lots of shipments (dry, frozen, liquid cargo), brokerage for chartering ships, cargo insurance, ...

In addition to providing transportation services, we are always ready to share our experience and provide partners and customers with all agency services for ships calling at Vietnamese ports, including: procedures for ships. entering and leaving ports, arranging loading and unloading, repairing ships, providing information, finding goods for ships, agents protecting ship owners' rights, supplying ships, etc.





NAM PHAT GROUP



NAM PHAT GROUP

Headquarter: Room 1010 & 1011 - 18T1 - Trung Hoa Nhan Chinh Area - Thanh Xuan Dist. – Hanoi - Vietnam

Tel: 046 281 0835 / Fax: 046 281 0869

Email: namphatsteel@yahoo.com.vn

Website: www.namphatsteel.com.vn

NAM PHAT SHIPBUILDING FACTORY

Address: Ha An Quarter – Quang Yen Town – Quang Ninh Province - Vietnam

Tel: 033 3551511 – 046 2512489 / Fax: 033 3551511

Email: shipowner@namphatship.com.vn

Website: www.namphatship.com.vn

NAM PHAT SHIPPING REPRESENTATIVE OFFICE

Address: Room 1010 - 18T1 - Trung Hoa Nhan Chinh Area - Thanh Xuan Dist. – Hanoi - Vietnam

